

QG series

QG76-SD-001..025H-ASP-CM

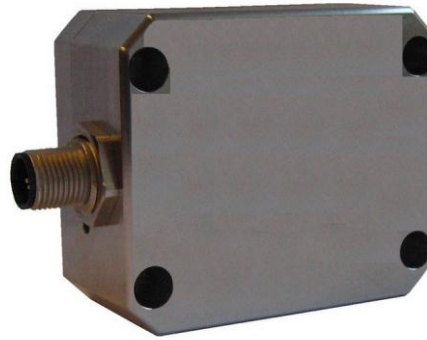
Tilt switch programmable

2 axis horizontal mounting

Output
PNP

Supply voltage
8 - 30V dc

Measuring range
Switch points
up to $\pm 25^\circ$



QG76-SD-001..025H-ASP-CM

Housing
Dimensions
Mounting
Ingress Protection (IEC 60529)
Relative humidity
Weight
Supply voltage
Polarity protection
Current consumption
Operating temperature
Storage temperature
Measuring range
Centering function
Frequency response (-3dB)
Accuracy
Offset error
Non linearity
Sensitivity error
Resolution
Temperature coefficient
Max mechanical shock
Output
Output load
Short circuit protection
Boot up time

General specifications v20150223

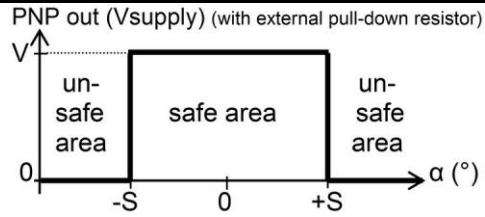
Stainless steel (AISI 316)
70x60x33 mm
4x M4x25 mm stainless steel pozidrive screws included (optional: 2x Ø4mm positioning pins)
IP67
0 - 100%
ca 220 gr
8 - 30V dc
Yes
≤ 50 mA
-40 .. +85°C
-40 .. +85°C
Switch points up to $\pm 25^\circ$
Yes (0°), range: $\pm 5^\circ$
0,5 Hz
$< \pm 0,09^\circ$
$< \pm 0,01^\circ$ (after zeroing)
not applicable
not applicable
0,01°
$\pm 0,005^\circ/\text{K typ.}$
20.000g
dual PNP
100 mA cont., 250 mA max 10 sec., Resistive
No
< 10 ms

QG76-SD-001..025H-ASP-CM

PNP-output:

- Programmable switchpoints $\pm S$ (opt. QG65 Configurator RS232)
Factory default: $S = \pm 15^\circ$
- at 0° : safe area, conducting
- outside $\pm S$: unsafe, non-conducting
- Unpowered sensor: non-conducting
- hysteresis : $0,2^\circ$
- safe \blacktriangleright unsafe delay : 500 mS
- unsafe \blacktriangleright safe delay : 1000 mS

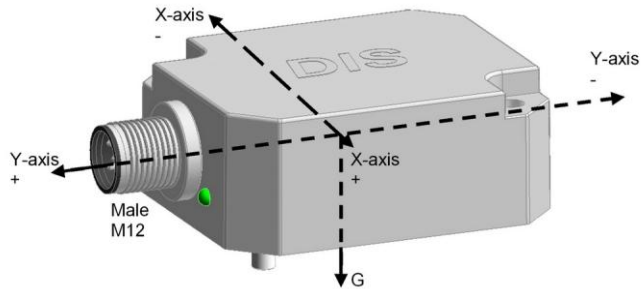
Transfer characteristic



QG76-SD-001..025H-ASP-CM

The default 0° position is when the sensor is mounted horizontally and no acceleration is applied.

Measurement orientation



QG76-SD-001..025H-ASP-CM

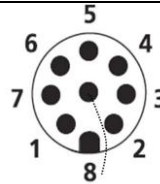
Connection

Wire / pin coding

Connectivity

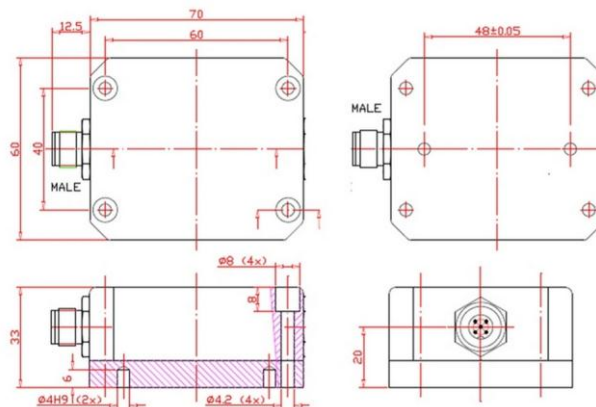
M12 male 8p connector

- | | |
|--------|--------------------------------|
| Pin 1: | Output Y |
| Pin 2: | Supply voltage |
| Pin 3: | Programming interface RS232 Rx |
| Pin 4: | Programming interface RS232 Tx |
| Pin 5: | Gnd |
| Pin 6: | Zero input |
| Pin 7: | Output X |
| Pin 8: | Shield |



QG76-SD-001..025H-ASP-CM

Mechanical dimensions



QG76-SD-001..025H-ASP-CM

Zero function

Zeroing should be done within 1 min. after power up.
After zeroing you've 1 min. left for another centering.
Normally the zero input should be left unconnected.
Connect zero input to ground for more than 0,5s