


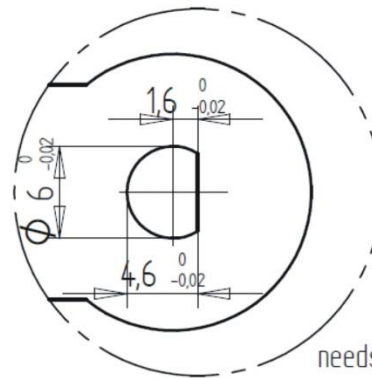
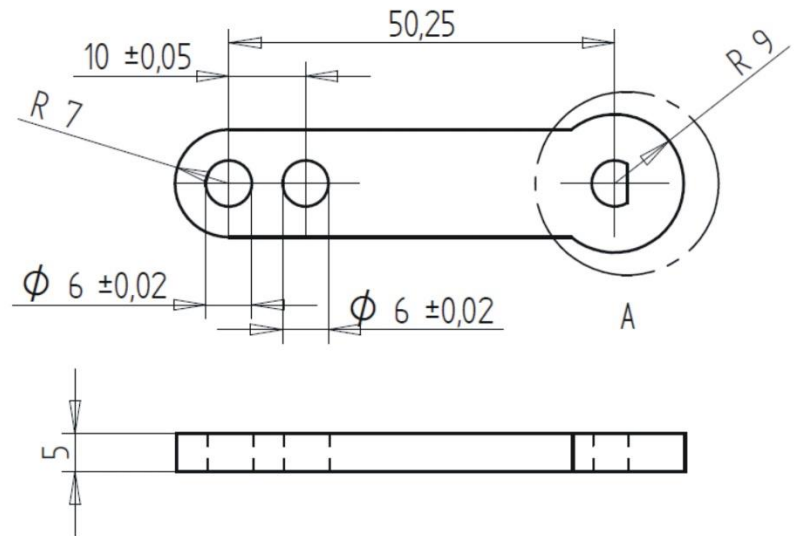


Lever QR46 + fixing ring	
Lever for QR46 shaft	
Plastic Lever for QR46	
Optional fixing ring	

Lever QR46 + fixing ring	General specifications v20220829
Lever	
Purpose	Lever for QR46 shaft
material	Plastic (PBT Arnite T06 202 black T6.03.10)
size	66x18 mm
D_shape hole	Fitting on QR46 D-shape shaft
Mounting method	To be pushed onto the QR46 D-shaft by hand (never use tools for mounting, this can damage the QR46 sensor)
Order code DIS	15050
Fixing ring	
Purpose	Ring for mounting on QR46 shaft with mounted lever. Normally the fitting of the lever itself is tight and no extra fixing ring is required. The ring can be mounted optionally
Size	Outer diameter: 15.2 mm Thickness: 1.3 mm Material thickness: 0.25mm Inner hole for shaft diameter: 6mm
Material	Stainless steel (AISI 301; EN 1.4310)
Mounting method	To be pushed onto the QR46 D-shaft by hand (never use tools for mounting, this can damage the QR46 sensor)
Order code DIS	15101

Mechanical dimensions



needs tight fit on Axle-D with hole

DETAIL A

Application example:

Lever mounted on QR46.

