
User manual for the QG65 configurator

Rev : 1.1
Date : 20101006
Authors : P. van Wees

Content

- 1. Introduction..... 2
- 2. Getting started 2
 - A. Serial port settings..... 2
 - B. Sensor information..... 3
 - C. Sensor measurement values 3
 - D. Settings..... 3
- 3. Settings 3
 - A. Sensor 3
 - B. Configuration..... 5
 - C. Zero calibration 5
 - D. Output1/2..... 6
 - E. LED's 12
- 4. Specification 13

1. Introduction

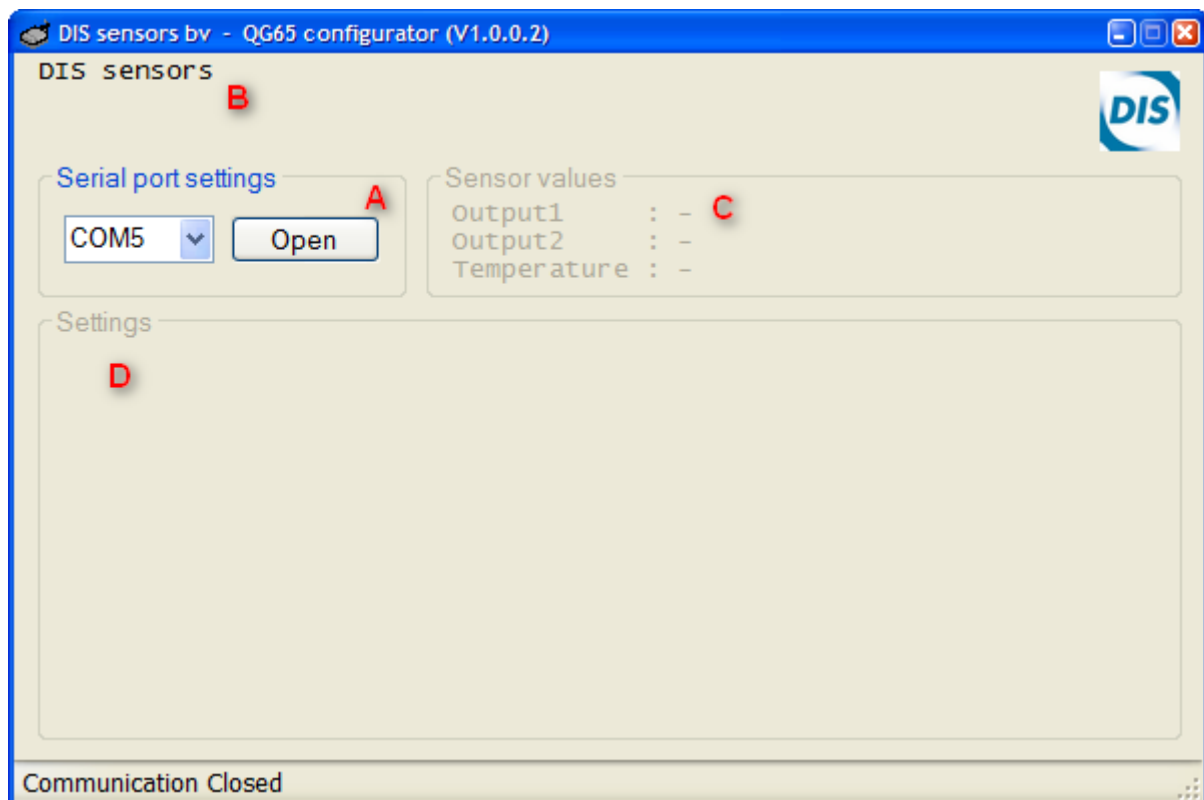
The *QG65 configurator* is a tool which can be used to configure QG65 sensors with RS232 communication. The complete configuration of a QG65 sensor can be downloaded from the sensor to a file. At a later time the configuration of the sensor can be restored by uploading this configuration file to the sensor. The *QG65 configurator* tool can also be used to log the measuring values into a log file.

What is needed:

- PC running MS-Windows with the *QG65 configurator* tool installed
- free serial port (COM port; RS232 port) or USB-to-serial converter
- Connection cable
- QG65 sensor with M12 8-pins connector

2. Getting started

After starting the application the following screen will be shown:



A. Serial port settings

Select the COM port which is connected to the QG65 sensor (COM1 to COM24 are supported) and press the Open button. The *QG65 configurator* will start communicating with the sensor. If no sensor is found 'Communication Error' is shown in red in the status bar at the bottom of the window. The QG65 sensor communicates at a fixed baud-rate of 38400 Baud.

B. Sensor information

This part of the window shows some information of the connected sensor. The following information is available: Device name, software version and serial number.

C. Sensor measurement values

This part of the window shows the output values of the connected sensor. Also the state of the output is shown behind the measured value.

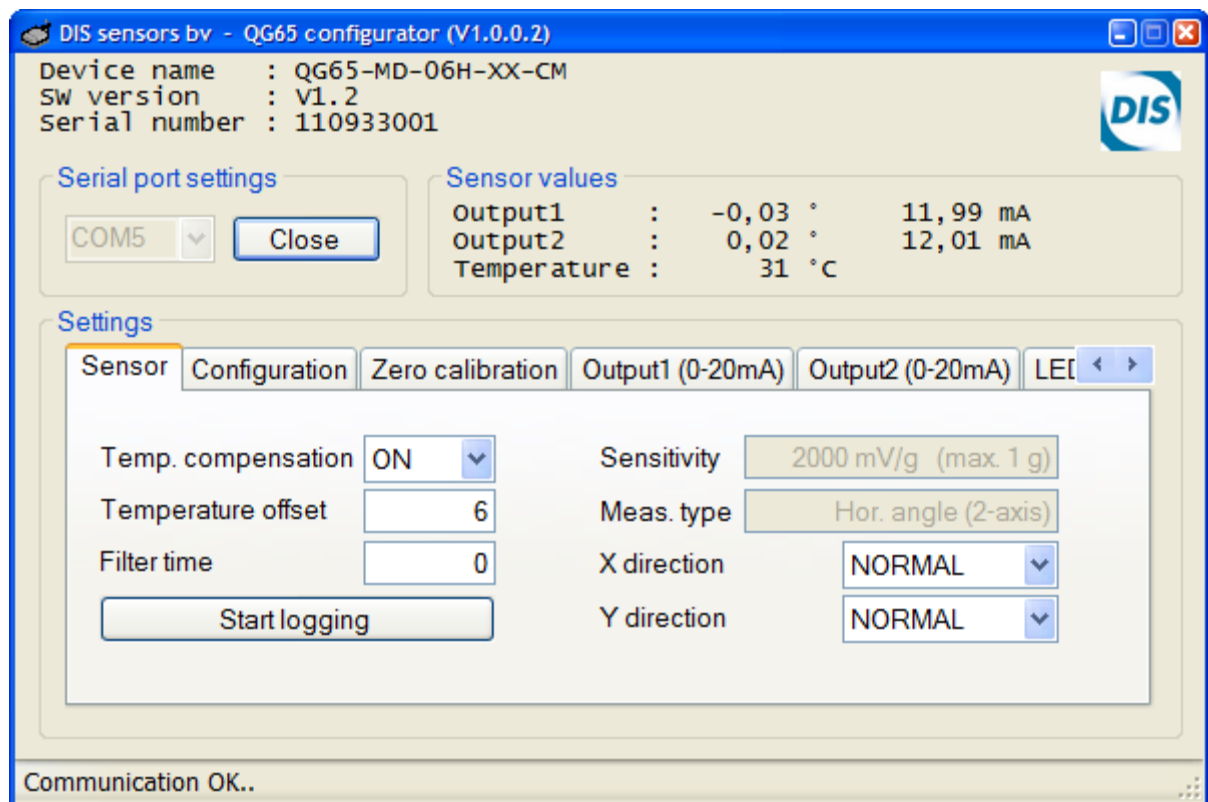
D. Settings

In this part of the screen some tab-pages are shown where the configuration parameters can be changed. Also the sensor configuration can be stored or restored to or from a file.

3. Settings

The following tab pages are available: Sensor, Configuration, Zero calibration, Output1, Output2 and LED's.

A. Sensor



In this tab page general sensor settings can be made.

- Temp. Compensation Switch OFF/ON the internal temperature compensation algorithm
- Temperature offset The offset in degrees °C. Please keep in mind that the temperature is the internal sensor temperature. This temperature is about 8 to 10 degrees °C higher than the environment temperature.

User manual for the QG65 configurator

- Filter time [ms] Setting for the internal 1st order low-pass filter. The time is given in milliseconds. The cut-off (-3dB) frequency is the reverse of the filter time and can be calculated as follows: $f_{\text{cut-off}} = 1000 / \text{filter-time [Hz]}$. Eg. A filter time of 2000 ms is equal to a cut-off frequency of 0,5 Hz.
- Start/stop logging By pressing the 'Start logging' button the sensor values are logged to a file. The file is in plain text format and the values are tab-separated. The log file can be easily imported in Microsoft Excel.

Example:

09:51:30,11	00:00:00,07	1	0,36	0,02	31
09:51:30,21	00:00:00,17	2	0,31	0,02	31
09:51:30,30	00:00:00,26	3	0,37	0,01	31
09:51:30,39	00:00:00,35	4	0,32	0,03	31
09:51:30,49	00:00:00,45	5	0,33	0,00	31

The following values are available:

column1: absolute time of sample (hh:mm:ss,ss)

column2: relative time of sample (hh:mm:ss,ss)

column3: sample number

column4: measurement value output1

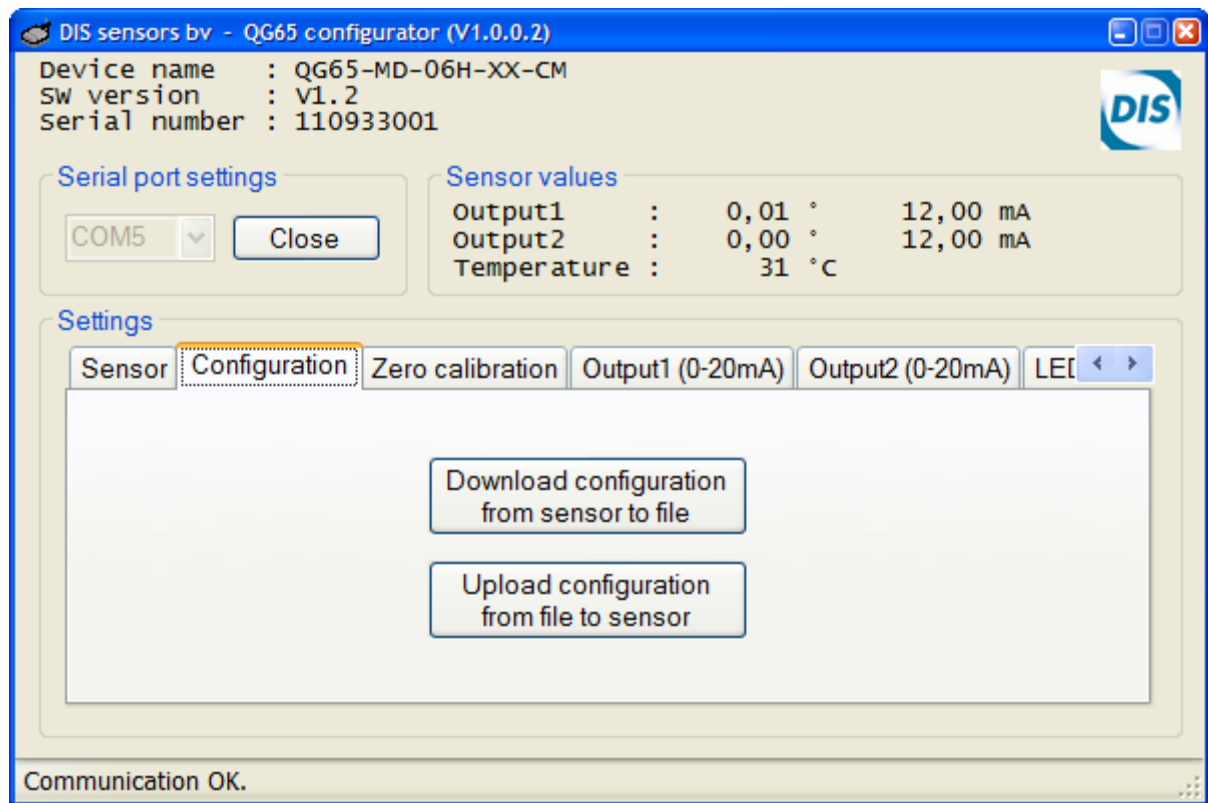
column5: measurement value output2

column6: temperature in degrees °C

The sample rate is approximately 10 Hz.

- Sensitivity Reads the sensitivity of the internal g-sensor. This setting is read-only.
- Measurement type Reads the measurement type of the sensor. The following measurement types are available: Horizontal angle (2-axis), Vertical angle (1-axis), Acceleration (2-axis). This setting is read-only.
- X/Y direction With this setting the sign of the measurement value can be reversed.
- Output mode (1-axis) With this setting the output range of the measurement value can be switched from -180°-+180° to 0°-360°.

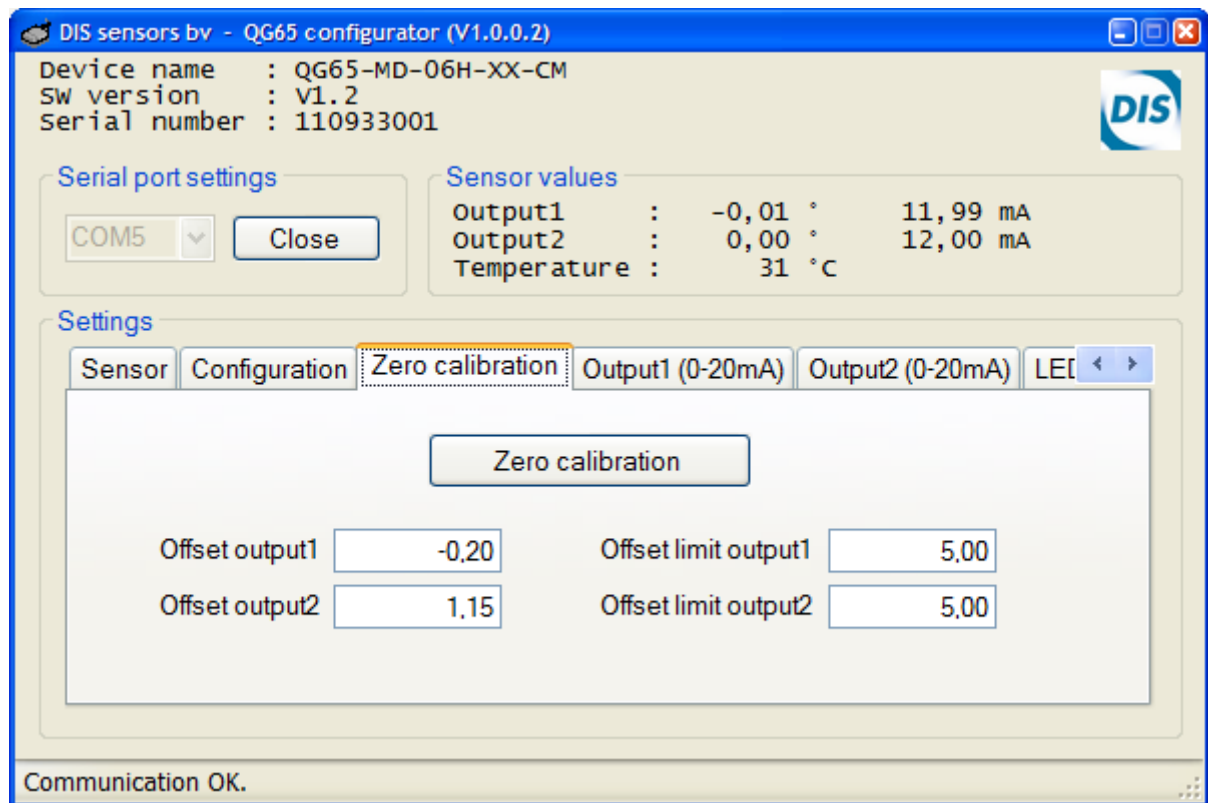
B. Configuration



With this tab page the complete configuration of a sensor can be stored/restored to/from a file. The serial number of the sensor is stored in the file. During a restore it is checked that the serial number matched with the configuration file. If there is a mismatch the user can choose to upload the configuration to the sensor, although some settings in the sensor will not be overwritten.

C. Zero calibration

(or called Center calibration for 1-axis 0° to 360°, because it calibrates the 180° point)



In this tab page the sensor can be calibrated.

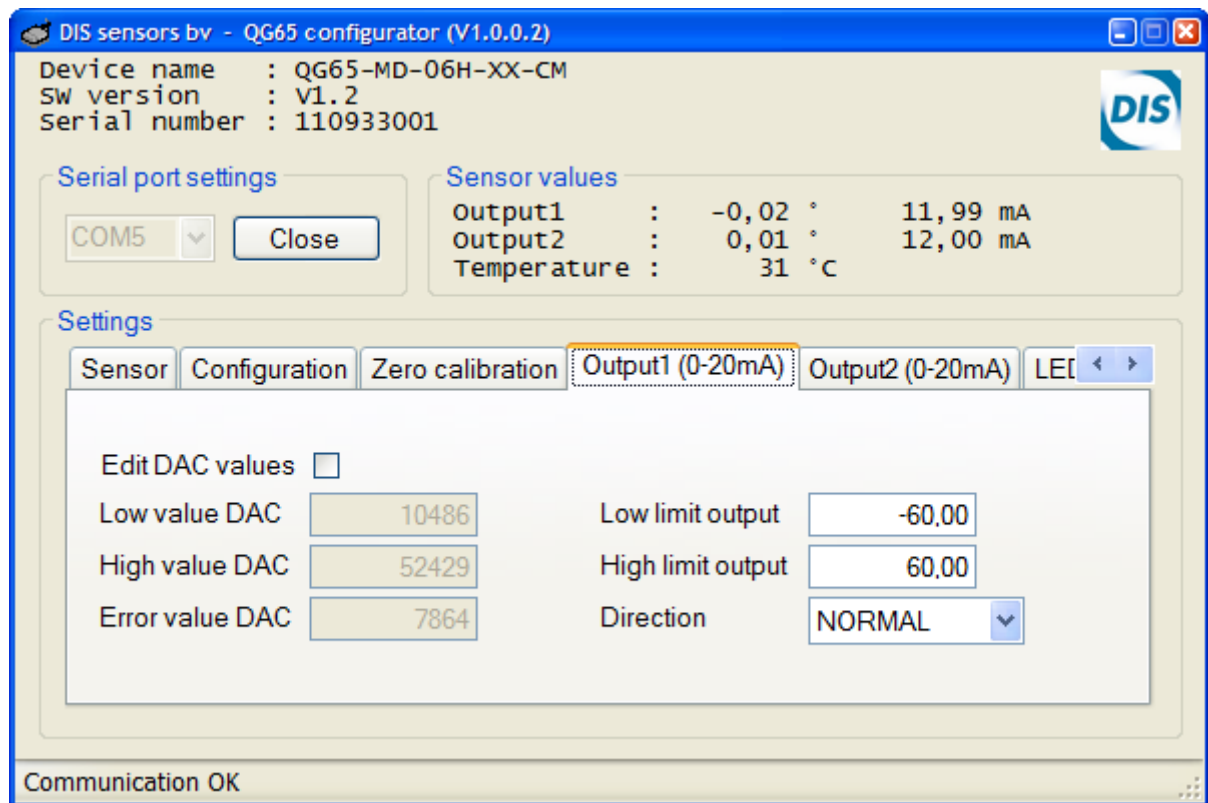
- Zero calibration By pressing this button a zero calibration is started. After a few seconds the calibration is done. The offset values for output1 and output2 are automatically updated. When the new calculated offset is outside limits, the old offset is used.
- Offset output1/2 These values are automatically updated by doing a zero calibration. Additionally these values can be changed when needed. The effect of the new offset can be noticed in the sensor values.
- Offset limit output1/2 During a zero calibration is checked if the new calculated offset is within this limit. A limit of 5.00° means that the offset may be between -5.00° and +5.00°. When the measurement type is "Vertical angle (1-axis)" this setting is not available.

D. Output1/2

The QG65 sensor can be provided with a few different outputs. The output type is fixed and is determined during manufacturing. Different output types are: current output (0-20mA), voltage output (0-5V or 0-10V), PWM output or NPN alarm output.

Current output (0-20mA)

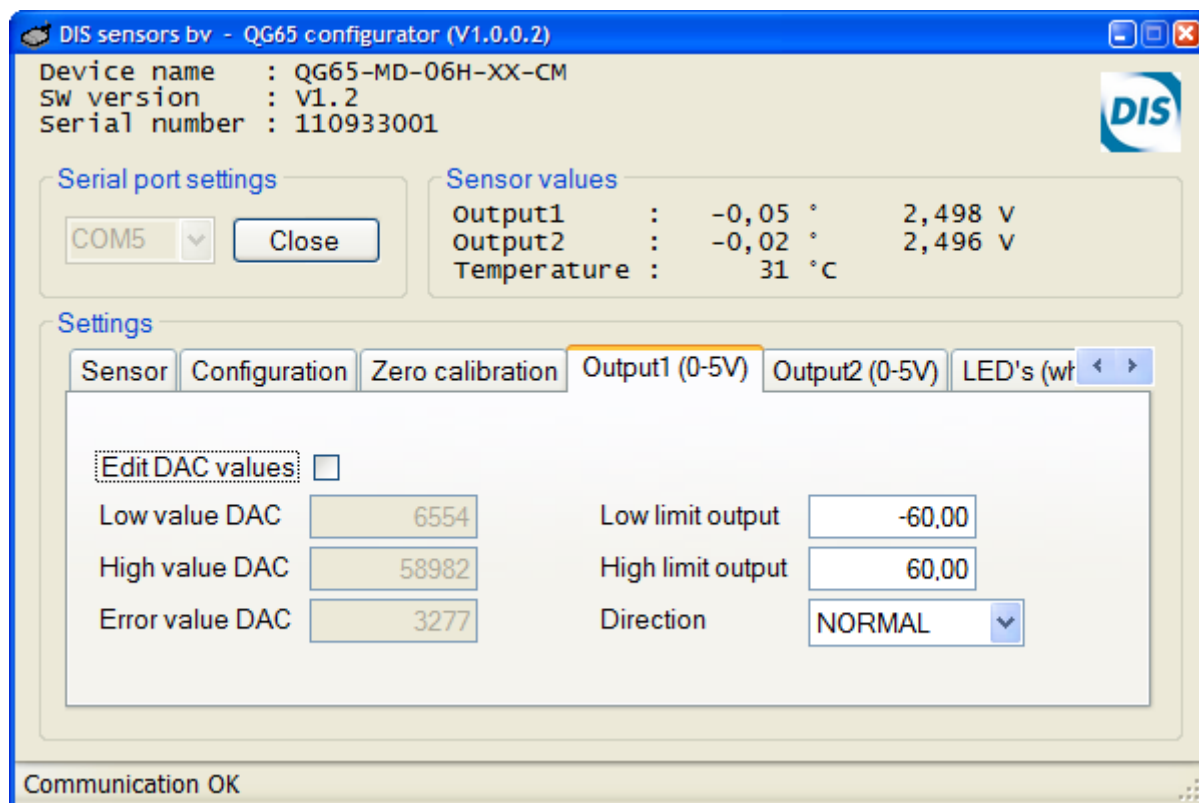
User manual for the QG65 configurator



- Edit DAC values To enable changes in the DAC settings. Normally this is not necessary. Please be careful when changing these values.
- Low value DAC The lowest value that the output of the sensor can drive. The DAC resolution is 16 bits (0-65535). The lowest value corresponds with 0mA, the highest value corresponds with 25mA. The default value for this setting is 10486, which is 4mA.
- High value DAC The highest value that the output of the sensor can drive. The default value for this setting is 52428, which is 20mA.
- Error value DAC When an error occurs in the sensor, like a failing self-test or a EEPROM checksum error, the output of the sensor can be driven to a specific error value. The default value for this setting is 7864, which is 3mA.
- Low limit output The lowest value the sensor can measure (normally the 4mA value)
- High limit output The highest value the sensor can measure (normally the 20 mA value)
- Direction Normal: low limit output is 4mA; high limit output is 20mA
Reversed: low limit output is 20mA; high limit output is 4mA

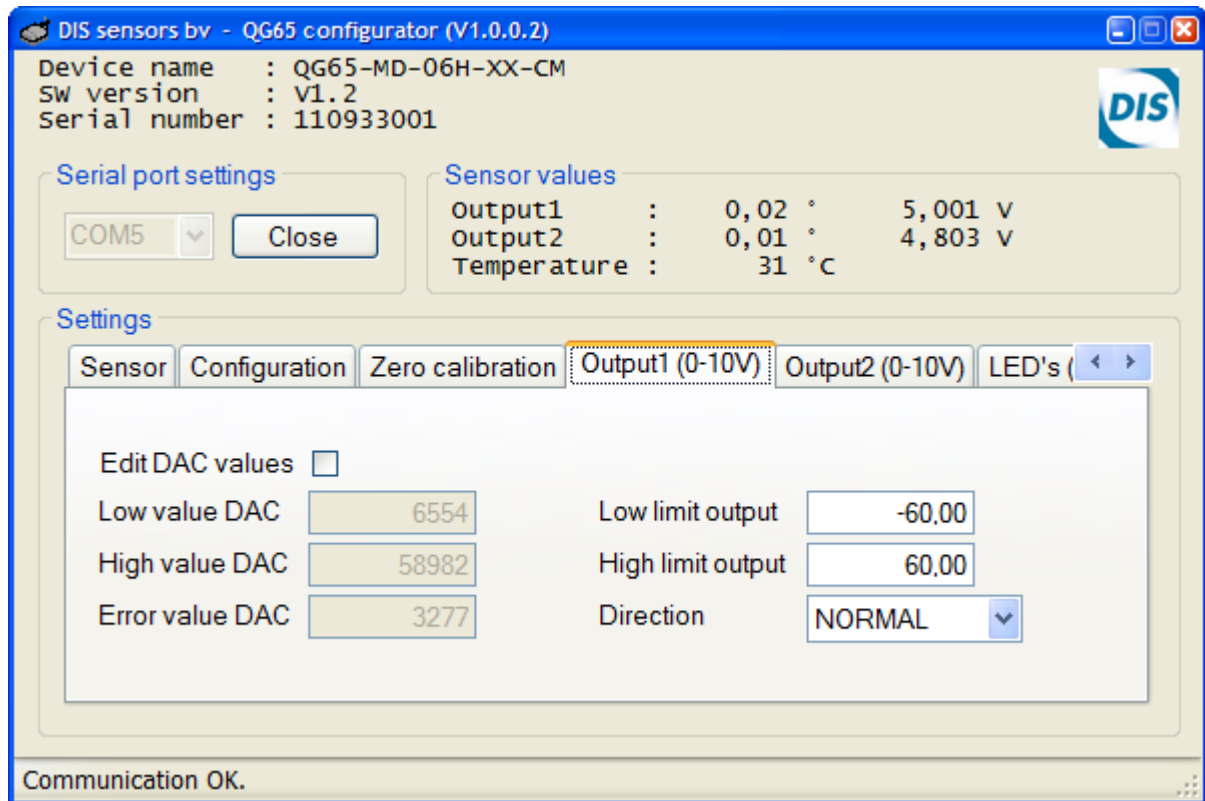
Voltage output (0-5V)

User manual for the QG65 configurator



- Edit DAC values To enable changes in the DAC settings. Normally this is not necessary. Please be careful when changing these values.
- Low value DAC The lowest value that the output of the sensor can drive. The DAC resolution is 16 bits (0-65535). The lowest value corresponds with 0V, the highest value corresponds with 5V. The default value for this setting is 6554, which is 0,5V.
- High value DAC The highest value that the output of the sensor can drive. The default value for this setting is 58982, which is 4,5V.
- Error value DAC When an error occurs in the sensor, like a failing self-test or a EEPROM checksum error, the output of the sensor can be driven to a specific error value. The default value for this setting is 3277, which is 0,25V.
- Low limit output The lowest value the sensor can measure (normally the 0,5V value)
- High limit output The highest value the sensor can measure (normally the 4,5V value)
- Direction Normal: low limit output is 0,5V; high limit output is 4,5V
Reversed: low limit output is 4,5V; high limit output is 0,5V

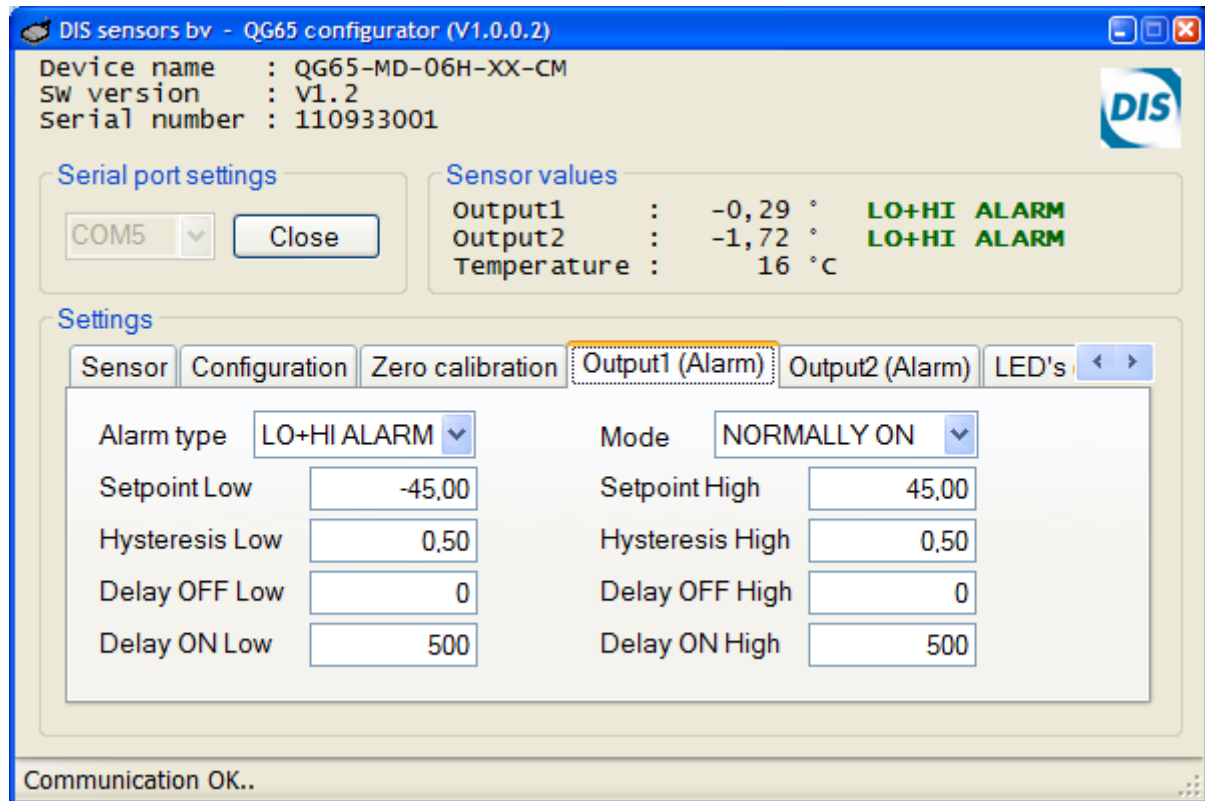
Voltage output (0-10V)



- Edit DAC values To enable changes in the DAC settings. Normally this is not necessary. Please be careful when changing these values.
- Low value DAC The lowest value that the output of the sensor can drive. The DAC resolution is 16 bits (0-65535). The lowest value corresponds with 0V, the highest value corresponds with 10V. The default value for this setting is 6554, which is 1,0V.
- High value DAC The highest value that the output of the sensor can drive. The default value for this setting is 58982, which is 9,0V.
- Error value DAC When an error occurs in the sensor, like a failing self-test or a EEPROM checksum error, the output of the sensor can be driven to a specific error value. The default value for this setting is 3277, which is 0,5V.
- Low limit output The lowest value the sensor can measure (normally the 1,0V value)
- High limit output The highest value the sensor can measure (normally the 9,0V value)
- Direction Normal: low limit output is 1,0V; high limit output is 9,0V
Reversed: low limit output is 9,0V; high limit output is 1,0V

PWM output

Alarm output (NPN)

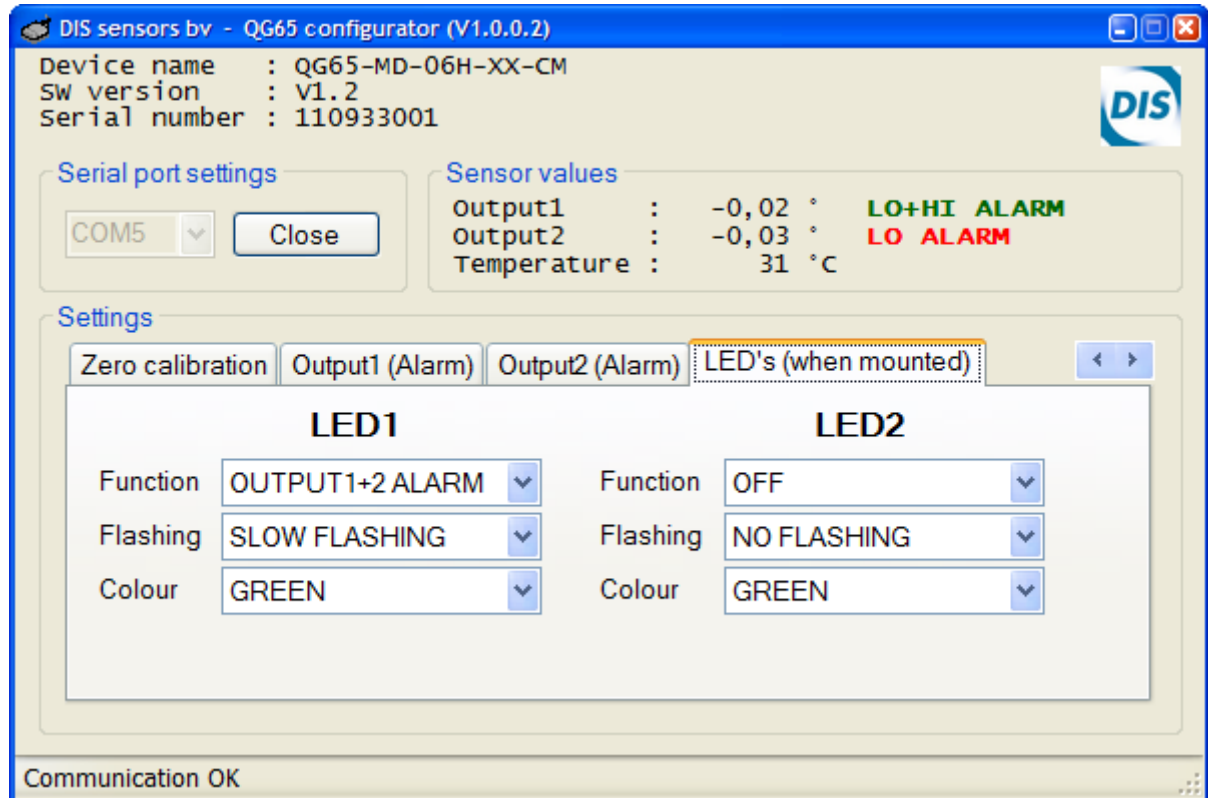


- Alarm type Low alarm, High alarm, Low+High alarm, or disabled.
- Setpoint Low The switching point of the Low alarm. When the sensor value is lower than this value the alarm is activated.
- Hysteresis Low When the sensor value becomes higher than Setpoint Low + Hysteresis Low the alarm is deactivated.
- Delay OFF Low Delay time in milliseconds before the output is deactivated when a low alarm situation has disappeared.
- Delay ON Low Delay time in milliseconds before the output is activated when a low alarm situation has appeared.
- Mode Normally OFF No alarm: NPN output is not conducting
 Alarm active: NPN output is conducting
 Normally ON No alarm: NPN output is conducting
 Alarm active: NPN output is not conducting
- Setpoint High The switching point of the High alarm. When the sensor value is higher than this value the alarm is activated.
- Hysteresis High When the sensor value becomes lower than Setpoint High - Hysteresis High the alarm is deactivated.
- Delay OFF High Delay time in milliseconds before the output is deactivated when an high alarm situation has disappeared.

User manual for the QG65 configurator

- Delay ON High Delay time in milliseconds before the output is activated when an high alarm situation has appeared.

E. LED's



When the QG65 sensor is provided with LED's the behaviour of the LED's can be changed with the settings on this tab page. When no LED's are mounted this tab page can be ignored. When the sensor value is between limits the colour of the LED is steady GREEN. When an alarm condition is reached the LED can change colour and/or start flashing. LED1 is the LED next to the connector. LED2 is the LED opposite to the connector.

- Function OFF, the LED will always be steady GREEN
 OUTPUT1 ALARM, the LED will show the state of output1
 OUTPUT2 ALARM, the LED will show the state of output2
 OUTPUT1+2 ALARM, the LED will show the state of both output1 and output2.
- Flashing When an alarm condition is reached, the LED will start flashing. The flashing frequency can be set to the following values:
 NO FLASHING, the LED will be steady.
 SLOW FLASHING, the LED will flash 1x per second.
 MEDIUM FLASHING, the LED will flash 3x per second
 FAST FLASHING, the LED will flash 5x per second
- Colour GREEN, in an alarm condition the LED will flash GREEN
 RED/GREEN, in an alarm condition the LED will flash RED and GREEN
 RED, in an alarm condition the LED will flash RED

4. Specification

Supported Operating Systems: Windows NT, Windows XP, Windows Vista and Windows 7.

To use the *QG65 configurator* utility at least one free serial port (COM) is needed. If a serial port is not available, an USB-to-serial converter can be used.

The *QG65 configurator* is a MS-Windows application written in C# with Microsoft Visual Studio 2008. The *.NET framework 3.5* has to be installed. The installer will check if the correct *.NET framework* is installed. It will download and install a newer version of the *.NET framework* if necessary.

Connection diagram:

